

# LEER

AMERICA'S #1 TRUCK COVER



NISSAN

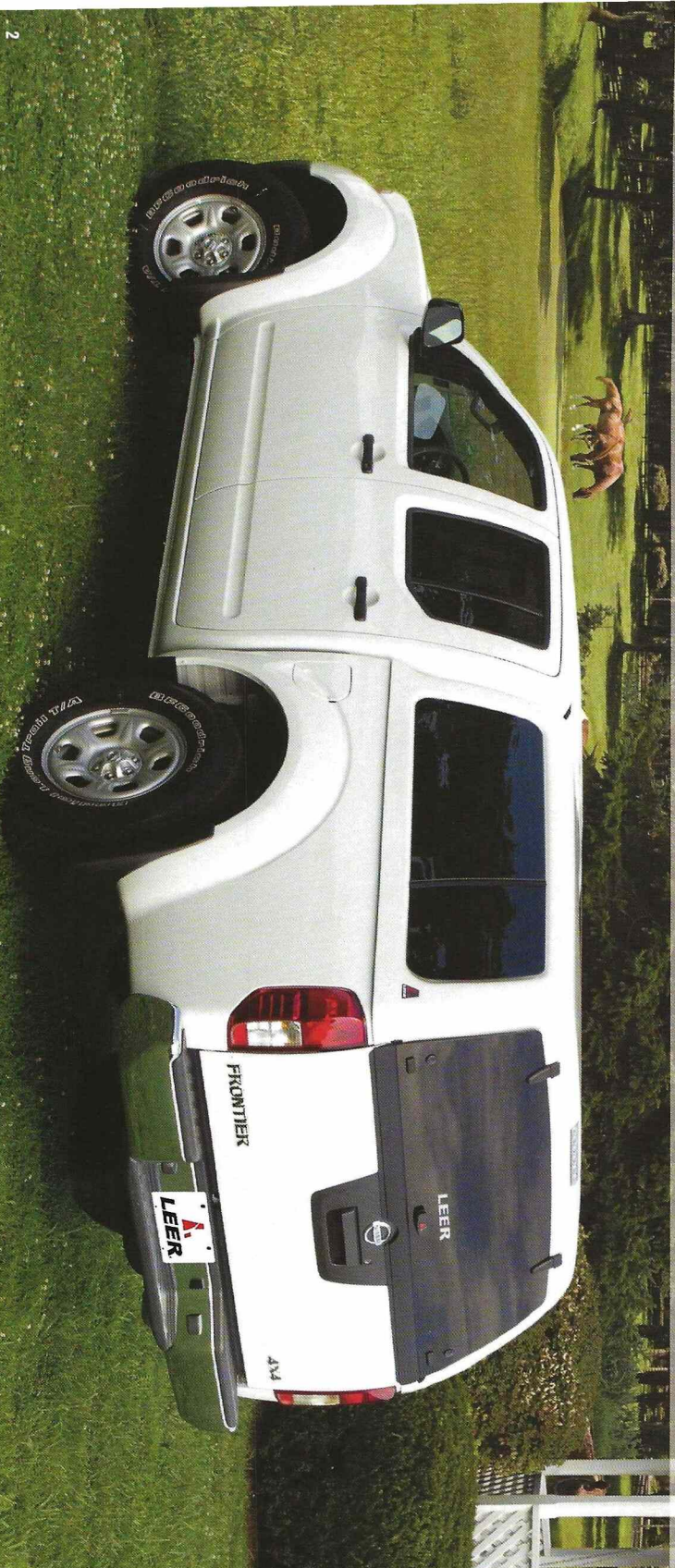


## 100XQ

Pack all the essentials and leave the city behind in style with your gear secure and protected for carefree travel. LEER's flagship 100XQ is designed for smooth integration with your truck's body lines. This premium cap features a frameless hidden hinge rear door, sleek one-piece tip-out side windows and an interior headliner — all standard!



## SLEEK SUV STYLING



## 100XL

100XL offers sleek, SUV styling with a frameless curved rear door, LEER twist handle, rotary latches, and tinted side windows with twist-out vents with screens. A LEER cap safely secures your cargo from the grocery store to the lake, and everywhere in between.

 **LEER®**  
[www.leer.com](http://www.leer.com)



# A GREAT FIT



## 100XR

LEER truck caps create a secure home base for cool drinks and extra gear anywhere adventure leads you. The 100XR combines the maximum ventilation of recessed 50/50 side sliding windows with screens, and the style of an all-glass rear door with a single center-mounted LEER flip-lock handle.

Shown with optional Thule AeroBlade Roof Rack System



## 100R

Take your son to the lake today and off to college when the time comes. The versatile security of a LEER truck cap provides years of utility, wherever life leads you. The 100R offers great value and good looks with screened 50/50 recessed sliding windows, a recessed rear door featuring double T-handle locks and recessed third brake light.



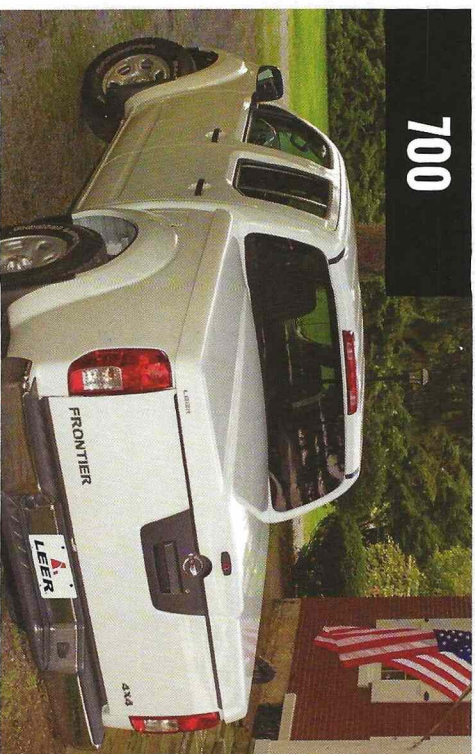


180

## EXCEPTIONAL CARGO SPACE

Haul loads of cargo with this mid-rise cap. Increased ceiling height adds up to 15% more interior room than cab high models for spontaneous purchases and taller cargo. The 180 includes recessed 50/50 side sliding windows with screens, a recessed LED third brake light, full-height framed rear door and two T-handle locks.

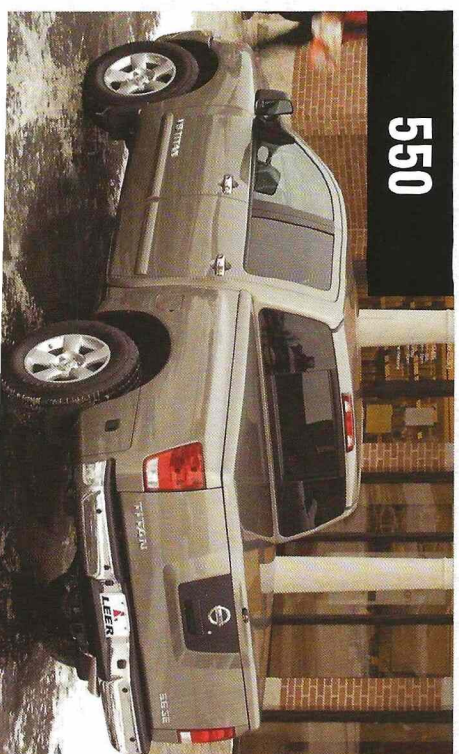
700



## STYLE & SELECTION

The 700's dimensional styling integrates smoothly with the truck's body lines for a superior custom fit. A LEER twist handle and automotive style rotary latches secure cargo.

550



This aerodynamic, low-profile design features LEER's SuperLift system, center mounted twist handle and automotive style rotary latches.

**LEER**  
www.leer.com

### FIBERGLASS TONNEAU FEATURES & OPTIONS

	700	550
Low-Profile Styling	•	•
Dimensional Styling	•	•
LEER SuperLift System	•	•
Easy No-Drill Installation	•	•
LEER 4-Bar Articulating Hinge	•	•
FlexSeal Front Rail	•	•
Bed Protection	•	•
Automotive Style	•	•
Rotary Latches	•	•
LEER Twist Handle Lock with Flip-Up Weather Cover	•	•
Custom Fit Design	•	•
Trimless, Finished Edges	•	•
Inside Release	•	•
Interior Headliner (Black or charcoal grey)	•	•
Pull-Down Strap	•	•
Automotive Paint	•	•
Keyless Remote	•	•
LED Light Bar with Switch	•	•
Battery Dome Light	•	•
Painted Rear Wing (lighted or unlighted)	•	•
Limited Lifetime Warranty (Refer to Owner's Manual)	•	•

• = Standard Equipment ■ = Optional



4-Bar Hinge



LEER SuperLift System



LEER Pull-Down Strap



FlexSeal



Twist Handle





**HF350M**

### HF 350M - HARD COVER TRI-FOLD STANDARD FEATURES

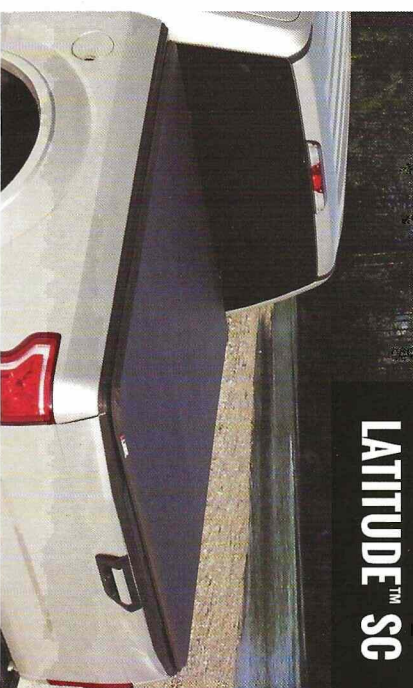
- Low profile, textured matte black panels
- Easy on, easy off, no-drill installation
- Exclusive CYNIC® latching system for one hand operation from either side of the vehicle (Patent pending)
- Cover can be latched with the tailgate closed
- Auxiliary safety buckles standard
- Panels can be in a stowed upright position during travel
- Superior water management; no drain tubes required
- 3-Year limited warranty



**SR250**

### SR 250 - SOFT ROLLING COVER STANDARD FEATURES

- Exclusive CYNIC® latching system allows opening from either side
- Automatic tension adjustment – no tools required
- Double-coated, commercial grade reinforced vinyl
- Easy no drill installation
- Lateral support bows roll up with the cover
- Sturdy aluminum bars, bows and rails
- Storage straps and buckles secure cover in open position
- Inside mounting – top of the bed rails are uncovered
- Beveled edges for excellent water management
- Ships with all tools required for installation
- Built-in pocket for tool storage



**LATITUDE™ SC**

### LATITUDE SC & LATITUDE - SOFT FOLDING COVERS STANDARD FEATURES

- Exclusive CYNIC® latching system allows opening from either side
- Cover snaps securely in place even with the tailgate raised
- No-drill design for easy one-person installation and removal
- Convex support frame and beveled edges shed water easily
- Self-tensioning system keeps the cover tight when closed
- Easy-adjust buckles hold the cover secure when open
- Two surface choices: Latitude – coated leather texture; Latitude SC – sail cloth

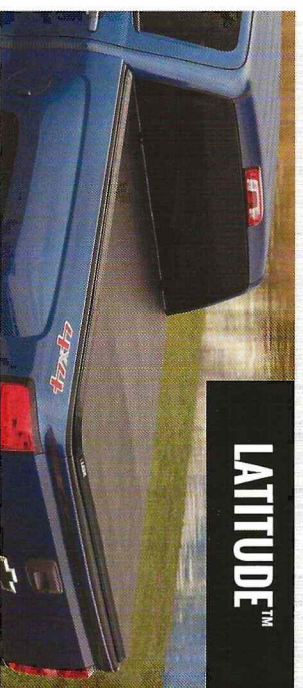


CYNIC® latches for easy opening

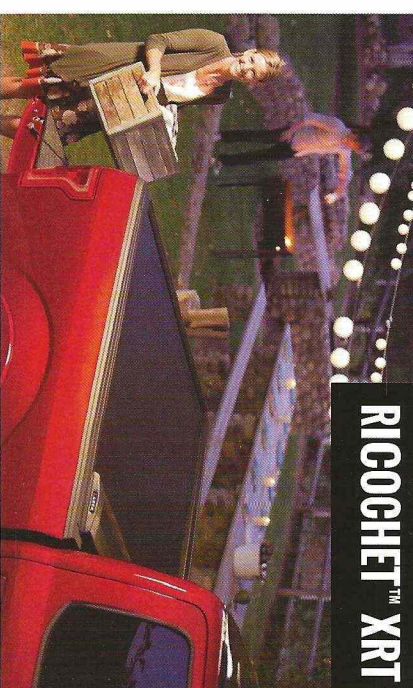
No-drill design

Beveled edges shed water easily

Buckles hold the system securely in place



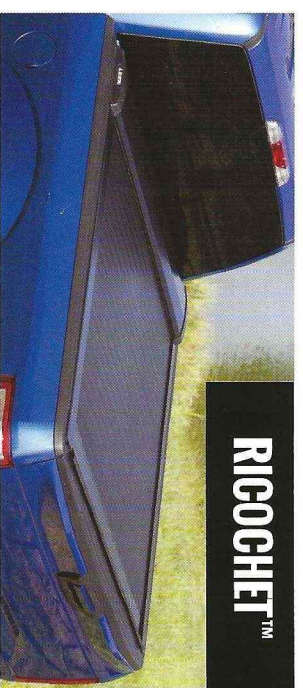
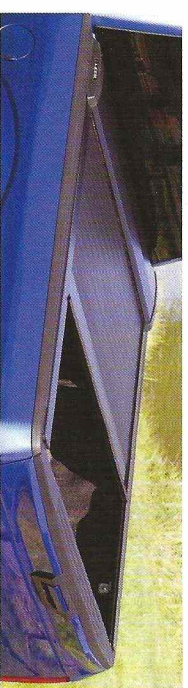
**LATITUDE™**



**RIGOCHET™ XRT**

### RIGOCHET XRT & RIGOCHET RETRACTABLE COVERS STANDARD FEATURES

- Installs quickly and easily\*
- Removes easily for full bed access\*
- Heavy-gauge aluminum panels with tough, powder coated matte surface – Rigochet XRT
- Strong aluminum panels covered with matte textured vinyl ArmorTek™ surface – Rigochet
- Turn knob to retract into front canister
- Built-in pull strap for easy closure
- Latches securely along bed rail every 12"
- Solid cover security
- Allows full rear visibility
- No bulky panels
- Three year warranty
- \*Requires Phillips screwdriver and 7/16" wrench



**RIGOCHET™**





100XQ

100XL

100XR

100R

180

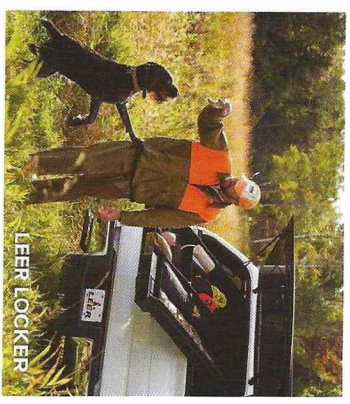
LEER CAP STANDARD FEATURES & OPTIONS

	100XQ	100XL	100XR	100R	180
Fixed Front Window	•	•	•	•	•
Frameless Hidden Hinge Curved Rear Door	•	•	•	•	•
Frameless Curved Rear Door	•	•	•	•	•
Recessed Framed Door w/Double T-Handle Locks	•	•	•	•	•
Framed Door w/Double T-Handle Locks	•	•	•	•	•
Dark Tint Glass	•	•	•	•	•
LEER Twist Handle Lock w/Flip-up Weather Cover	•	•	•	•	•
LEER Flip-lock Handle	•	•	•	•	•
Automotive Style Rotary Latches	•	•	•	•	•
One-Piece Tip-Out Side Windows w/Screens	•	•	•	•	•
Side Windows w/Twist-Out Vents and Screens	•	•	•	•	•
50/50 Sliding Windows w/Screens	•	•	•	•	•
Interior Headliner (Black or charcoal grey)	•	•	•	•	•
Interior LED Dome Light	•	•	•	•	•
Custom Fit Design	•	•	•	•	•
Automotive Paint	•	•	•	•	•
Insulated Roof	•	•	•	•	•
Recessed LED Third Brake Light	•	•	•	•	•
Fiberglass Base Rails	•	•	•	•	•
Skirted Rails (Varies by model)	•	•	•	•	•
Installation Bulb Seal	•	•	•	•	•
J-Bolt Installation Clamps	•	•	•	•	•
Limited Lifetime Warranty (Refer to Owner's Manual)	•	•	•	•	•
Front Slider Window	•	•	•	•	•
Removable Front Picture Window	•	•	•	•	•
Removable Front Slider Window	•	•	•	•	•
Radius Side Windows♦	•	•	•	•	•
Radius Side Window Sliders♦	•	•	•	•	•
Keyless Remote	•	•	•	•	•
Additional Battery or 12V Dome Light	•	•	•	•	•

♦Optional on select models. Ask your LEER retailer about current availability. • = Standard Equipment ■ = Optional

LEER CAP STANDARD FEATURES & OPTIONS

	100XQ	100XL	100XR	100R	180
12V Gas Prop Switch for 12V LED Dome Light	•	•	•	•	•
Interior Clothes Hanger (Single or double)	•	•	•	•	•
Blank Sides (No windows)	•	•	•	•	•
Three-Outlet 12V Powerblock	•	•	•	•	•
Overhead Gear Net (Requires roof rack)	•	•	•	•	•
Overhead Storage Bin (1 or 2, requires headliner)	•	•	•	•	•
Thule® AeroBlade Roof Rack System	•	•	•	•	•
(Includes locks – choice of brushed or black finish)	•	•	•	•	•
Thule® Tracker II Roof Rack System (Includes locks)	•	•	•	•	•
Thule® Fairing (Fits AeroBlade and Tracker II)	•	•	•	•	•
Thule® Tracks Only - Pair Installed	•	•	•	•	•
Thule® Tracker II Load Stops 503 (Set of four)	•	•	•	•	•
Thule® AeroBlade Load Stops 502 (Set of four)	•	•	•	•	•
Thule® Load Straps 15' (Set of two)	•	•	•	•	•
Thule® Quickdraw Ratchet System	•	•	•	•	•
(Two - 13' HD rope lines & four steel hooks)	•	•	•	•	•
Thule® Big Mouth Bike Carrier	•	•	•	•	•
Thule® Side Arm Bike Carrier	•	•	•	•	•
Thule® Top Deck Kayak Carrier	•	•	•	•	•
Thule® Portage Canoe Carrier	•	•	•	•	•
Thule® Snow Pack Ski/Snowboard Carrier	•	•	•	•	•
Thule® Snow Pack Telescoping Ski/Snowboard Carrier	•	•	•	•	•
Thule® Outbound Cargo Bag (Rack mount cargo bag)	•	•	•	•	•
Thule® Board Shuttle Paddle/Surf Board Carrier	•	•	•	•	•
Thule® Canyon Cargo Basket	•	•	•	•	•
Americas Package	•	•	•	•	•
Acadia Package	•	•	•	•	•
Journeyman Package	•	•	•	•	•
Screen Protectors	•	•	•	•	•
Cargo Hooks	•	•	•	•	•
LEER Locker™	•	•	•	•	•



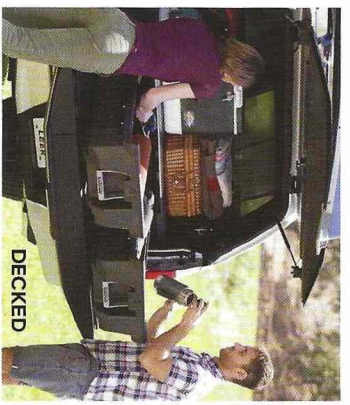
LEER LOCKER

**LEER LOCKER**™  
If you're an avid outdoorsman the LEER LOCKER™ is a secure, lockable, ceiling mounted, overhead sliding drawer system with a 100 lb. capacity, that stows gear safely out of the way, locked up tight. Convenient, adjustable storage dividers are great for organizing sports equipment, beach essentials and camping supplies.



BEDSLIDE

**BEDSLIDE**®  
BEDSLIDE® is the ultimate LEER Cap and Tonneau accessory for heavy-duty work or serious play. LEER with the BEDSLIDE® option turns your truck bed into an easy access, sliding drawer, making loading and unloading cargo simple, safe and secure.



DECKED

**DECKED**®  
DECKED is an innovative in-vehicle storage system that incorporates two weather-proof, bed-length drawers which roll out to provide easy access to tools, equipment and additional gear. The smooth rolling drawers can hold up to 200 lbs., each under a 2,000 lb. payload deck. Fits nearly all full size trucks and cargo vans. Numerous accessories like the D-Box toolbox are available.

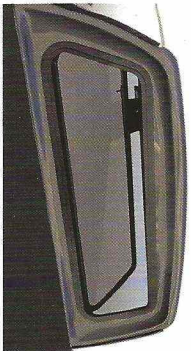


# OPTIONS

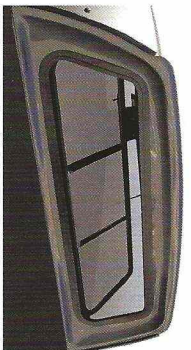
Choose individual options or a package that fits your outdoor lifestyle.



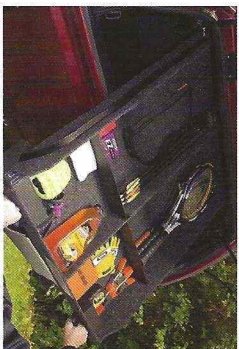
Front Slider



Removable Front Picture Window



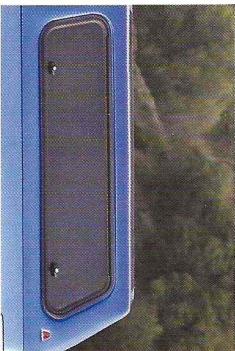
Removable Front Slider



LEER Locker™



Screen Protectors



Radius Side Window



Side Window Slider



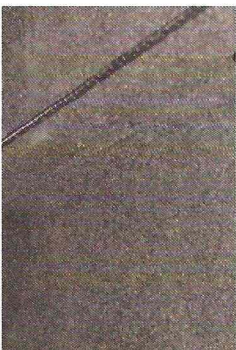
BEDSLIDE™



Fold-down Clothes Hanger



Keyless Remote – Uses Truck's Fob



Interior Headliner



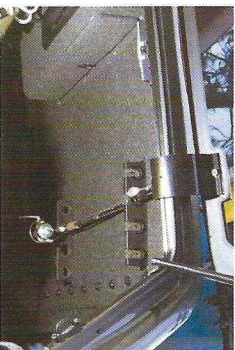
Locking Overhead Storage Box



Gear Net



3-Outlet 12V Powerblock



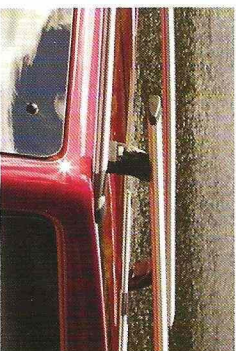
Fishing Rod Holder



Cargo Hooks - 4 or 8



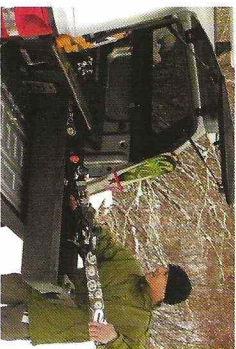
Thule® Tracker II with Push-button Locks



Thule® AeroBlade with Push-button Locks  
(Choice of Brushed or Black Finish)



Thule® Canyon Cargo Basket



DECKED Organizer



## LEER SPECIAL EDITION PACKAGES

These combination packages of popular options gear up any truck for action, and are available for virtually any LEER fiberglass cap.

### AMERICAS PACKAGE

- Thule® Tracker II roof rack system
- Interior headliner - choice of black or grey
- LEER Locker
- Dual 12V dome lights
- Gas Prop Switch

### ACADIA PACKAGE

- Thule® Tracker II roof rack system
- Interior headliner - choice of black or grey
- Removable picture or sliding window
- Gear net
- Dual 12V dome lights
- Gas Prop Switch

### JOURNEYMAN PACKAGE

- Thule® Tracker II roof rack system
- Interior headliner - choice of black or grey
- Gear net
- Dual 12V dome lights
- Gas Prop Switch
- Thule® Canyon cargo basket with stretch cargo net

### OTHER AVAILABLE THULE® OPTIONS:

- Thule® Big Mouth
- Thule® Snow Pack
- Thule® Fairing
- Thule® Portage Canoe Carrier with Tie-downs and Quick Draw
- Thule® Top Deck with Straps and Bow/Stern Tie-downs



**LEER**  
AMERICA'S #1 TRUCK COVER\*

www.leer.com



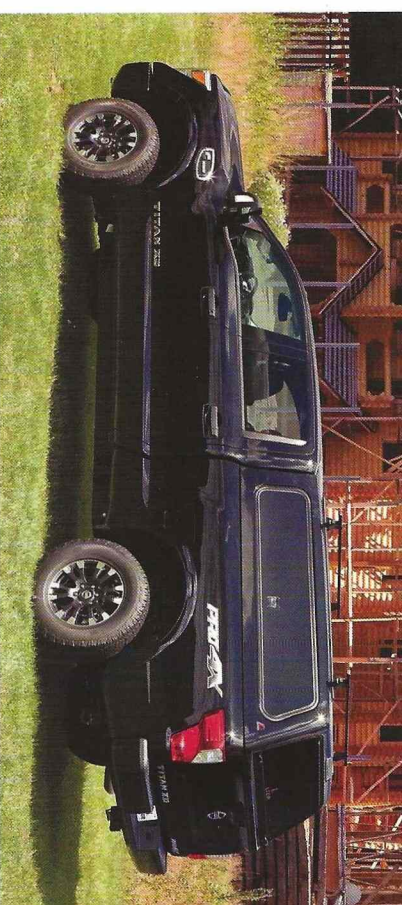
## DCC-MT3

Designed for maximum versatility, the DCC-MT3 is LEER's first all-aluminum truck cover with modular toolbox capability. Movable reinforced shelving and dividers, plus accessory kits including hooks and other securing devices, provide limitless configuration options. Wider, taller side access doors combined with a reinforced super cage infrastructure make it one of the strongest commercial truck covers in the market.

# WE GO TO WORK WITH YOU

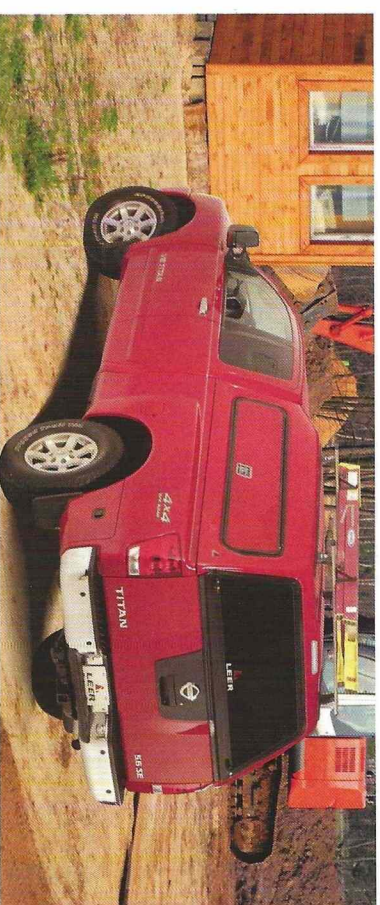
## DGC

Durable, lightweight aluminum LEER Deluxe Commercial Caps are customizable with configurations and options to fit any truck and worksite application. They're the affordable choice for demanding single cap or fleet buyers.



## 100RCG

This sleek, good-looking LEER cab-high cap provides a secure workshop while maintaining the automotive appeal of the truck.



## 180CC

The 180CC mid-rise commercial cap has structural reinforcements for heavy-duty applications. Options include commercial roof racks, fiberglass side access doors, tool boxes and storage solutions.

## MORE TRUCKS ARE DRIVEN TO WORK WITH RUGGED LEER COMMERCIAL CAPS THAN ANY OTHER BRAND!



All illustrations and specifications contained in this literature are based on the latest product information at the time of publication. LEER reserves the right to make changes in prices, colors, materials, equipment, specifications, and models at any time without notice or prior obligation. ©2019 LEER, A Member Company of TAG, Truck Accessories Group • 319 - Part #742566 • Form #9321

A Member Company of **TAG** Truck Accessories Group

AUTHORIZED LEER RETAILER